



GMT MONTHLY MEMBERSHIP PROGRESS REPORT

Results as of: 1/31/2020

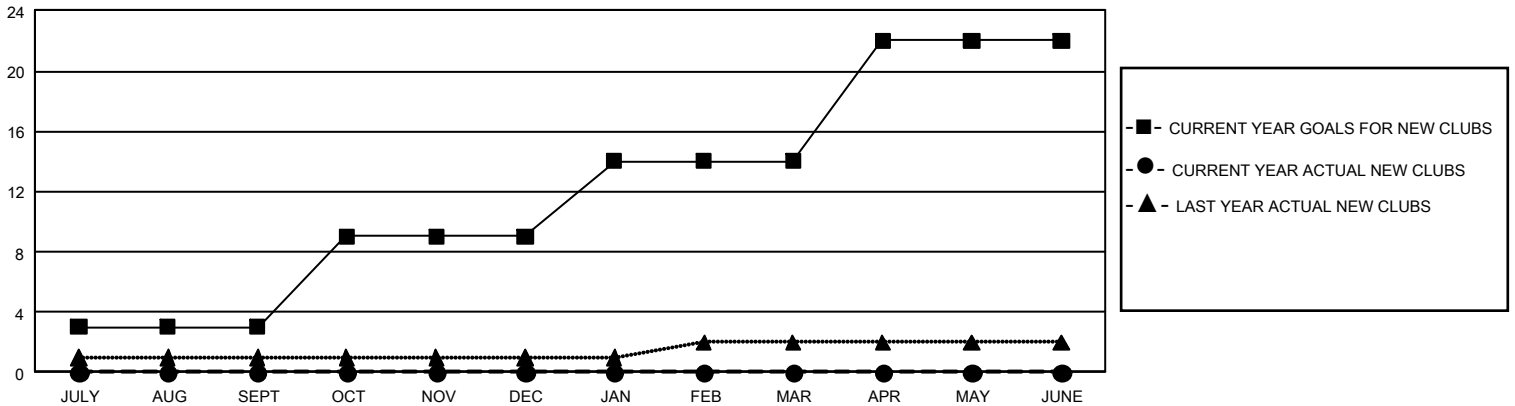
GMT Constitutional Area 1, Group H

GMT: OPEN

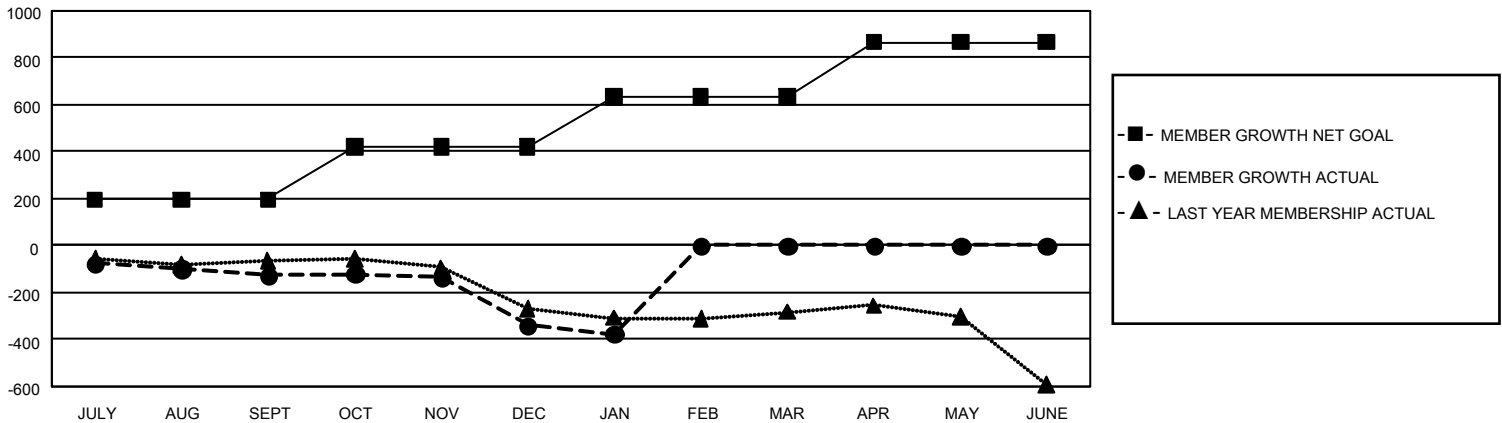
REPORT DOES NOT INCLUDE CLUBS IN UNDISTRICTED AREAS.

Clubs				Members			
RESULTS FOR 2019-2020				RESULTS FOR 2019-2020			
QUARTER	NEW CLUB GOAL	NEW CLUBS	DROPPED CLUBS	QUARTER	MEMBER GROWTH NET GOAL	MEMBER GROWTH ACTUAL	DROPPED MEMBERS ACTUAL (including transfers)
JULY/AUG/SEPT	9	0	3	JULY/AUG/SEPT	588	256	320
OCT/NOV/DEC	18	0	6	OCT/NOV/DEC	669	228	420
JAN/FEB/MAR	15	0	1	JAN/FEB/MAR	648	116	131
APR/MAY/JUNE	24	0	0	APR/MAY/JUNE	693	0	0

GOALS AND ACTUAL NEW CLUBS CUMULATIVE



GOALS AND ACTUAL MEMBERS CUMULATIVE



DROPPED CLUBS: 10	193 CLUBS OF 416 ADDED 1 OR MORE NEW MEMBERS	GENDER DISTRIBUTION MALE 6,387 (62.98%) FEMALE 3,754 (37.02%)
DROPPED MEMBERS DECEASED 95 CLUB CANCELLED 18 OTHER 757 <hr/> TOTAL 870	CLICK HERE FOR CUMULATIVE MEMBERSHIP DATA	TOTAL FAMILY UNIT MEMBERS 2,527 FAMILY MEMBERS PAYING HALF DUES 1,296